



US006783322B2

(12) **United States Patent**
Ray et al.

(10) **Patent No.:** **US 6,783,322 B2**
(45) **Date of Patent:** **Aug. 31, 2004**

- (54) **PUMP SYSTEM WITH VARIABLE-PRESSURE SEAL**
- (75) Inventors: **Robert B. Ray**, Clackamas, OR (US);
Joseph H. Reidy, Portland, OR (US);
Robert A. McCann, Tigard, OR (US);
Steven J. Schoebrun, Tigard, OR (US)
- (73) Assignee: **Roper Holdings, Inc.**, Wilmington, DE (US)

4,078,480 A	3/1978	Luck
4,306,838 A	12/1981	Trainer
4,446,391 A	5/1984	Sekine et al.
4,521,151 A	6/1985	Frater et al.
4,566,855 A	1/1986	Costabile et al.
4,604,035 A	8/1986	Roberts
4,838,763 A	6/1989	Kramer et al.
4,915,579 A	4/1990	Whittier et al.
4,930,986 A	6/1990	Cooper
5,011,166 A	4/1991	Watts

(List continued on next page.)

(*) Notice: Subject to any disclaimer, the term of this patent is extended or adjusted under 35 U.S.C. 154(b) by 14 days.

FOREIGN PATENT DOCUMENTS

DE	3802949	8/1989
EP	0739079	4/1996
JP	58036151	3/1983
WO	WO01/55593	8/2001

(21) Appl. No.: **10/131,311**

(22) Filed: **Apr. 23, 2002**

(65) **Prior Publication Data**

US 2003/0198554 A1 Oct. 23, 2003

(51) **Int. Cl.**⁷ **F04D 29/10**

(52) **U.S. Cl.** **415/112; 415/231**

(58) **Field of Search** 415/111, 112,
415/113, 231, 170.1; 277/42, 28, 12; 417/9,
423 R

Primary Examiner—Edward K. Look

Assistant Examiner—James M. McAleenan

(74) *Attorney, Agent, or Firm*—Kolisch Hartwell, P.C.

(57) **ABSTRACT**

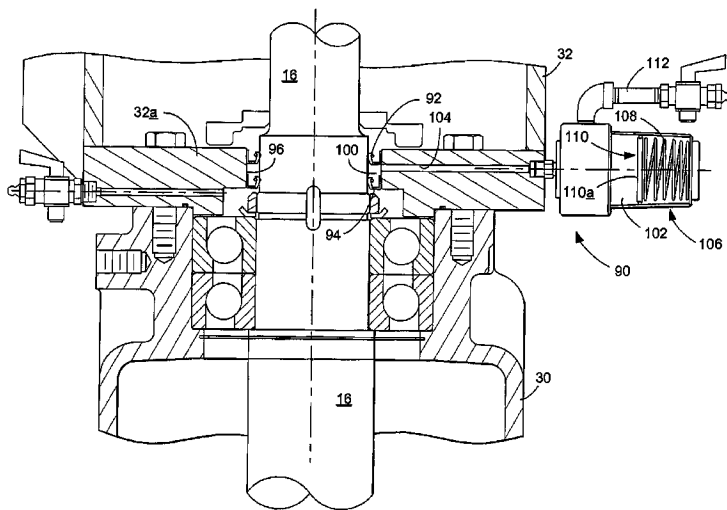
A pump system, including an impeller and an impeller shaft, which has one end secured to the impeller and another end that may be coupled to a motor to drive the impeller. The pump system further includes a substantially liquid-proof barrier which has an opening through which the impeller shaft extends. The opening in the barrier is sealed with a shaft sealing system that includes a supply chamber fluidly coupled with a cavity. The cavity surrounds, and is at least partially bounded by, the impeller shaft. The shaft sealing system further includes a pressure mechanism that is configured to pressurize lubrication matter contained within the supply chamber and cavity, so as to inhibit liquid from passing along the impeller shaft through the cavity and thereby penetrating the liquid-proof barrier. The pressure mechanism is further configured to vary pressure of the lubrication matter based on atmospheric pressure surrounding the pump system.

(56) **References Cited**

U.S. PATENT DOCUMENTS

1,651,881 A	12/1927	Frickey et al.
2,005,429 A	6/1935	Lichtenstein
2,164,485 A	7/1939	Yantis
2,460,849 A	2/1949	Senn
2,687,249 A	8/1954	Papanek et al.
2,960,938 A	11/1960	Williams
2,991,051 A	7/1961	Jones
3,153,382 A	10/1964	Blarcom, Jr.
3,291,473 A	12/1966	Sweeney et al.
3,339,491 A	9/1967	Malloch et al.
3,719,436 A	3/1973	McFarlin
3,746,472 A	7/1973	Rupp
3,839,863 A	10/1974	Frazier

32 Claims, 7 Drawing Sheets



U.S. PATENT DOCUMENTS

5,028,211 A	7/1991	Mordue et al.	5,490,768 A	2/1996	Veronesi et al.
5,101,128 A	3/1992	Veronesi et al.	5,499,902 A	3/1996	Rockwood
5,244,348 A	9/1993	Karls et al.	5,622,481 A	4/1997	Thut
5,322,416 A	6/1994	Karls et al.	5,642,986 A	7/1997	Rose
5,418,412 A	5/1995	Brucker	5,713,727 A	2/1998	Veronesi et al.
5,447,078 A	9/1995	Robinson, Jr. et al.	5,855,472 A	1/1999	Ravitts
			6,079,958 A	6/2000	Qandil
			6,183,208 B1	2/2001	Qandil et al.

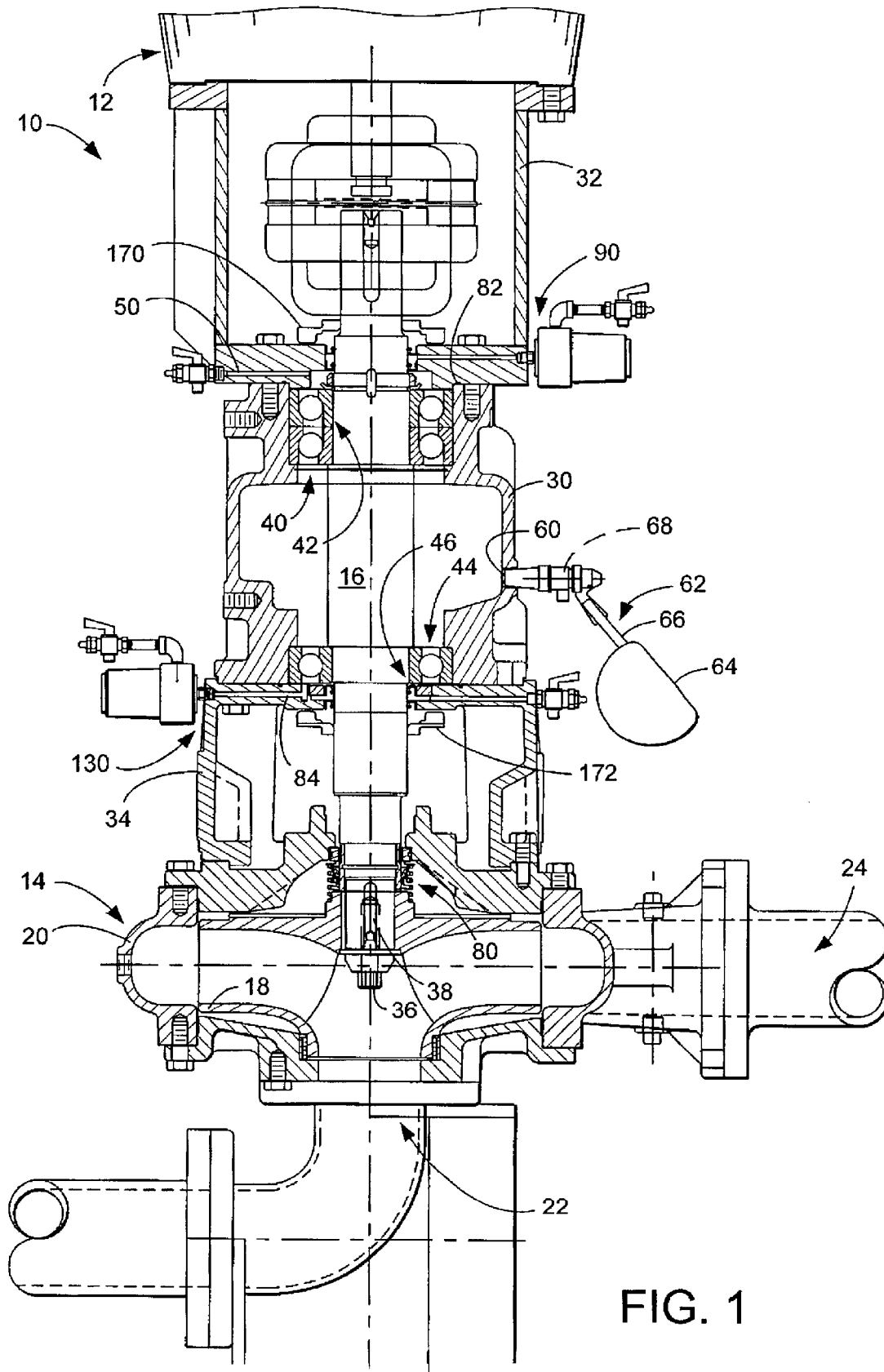


FIG. 1

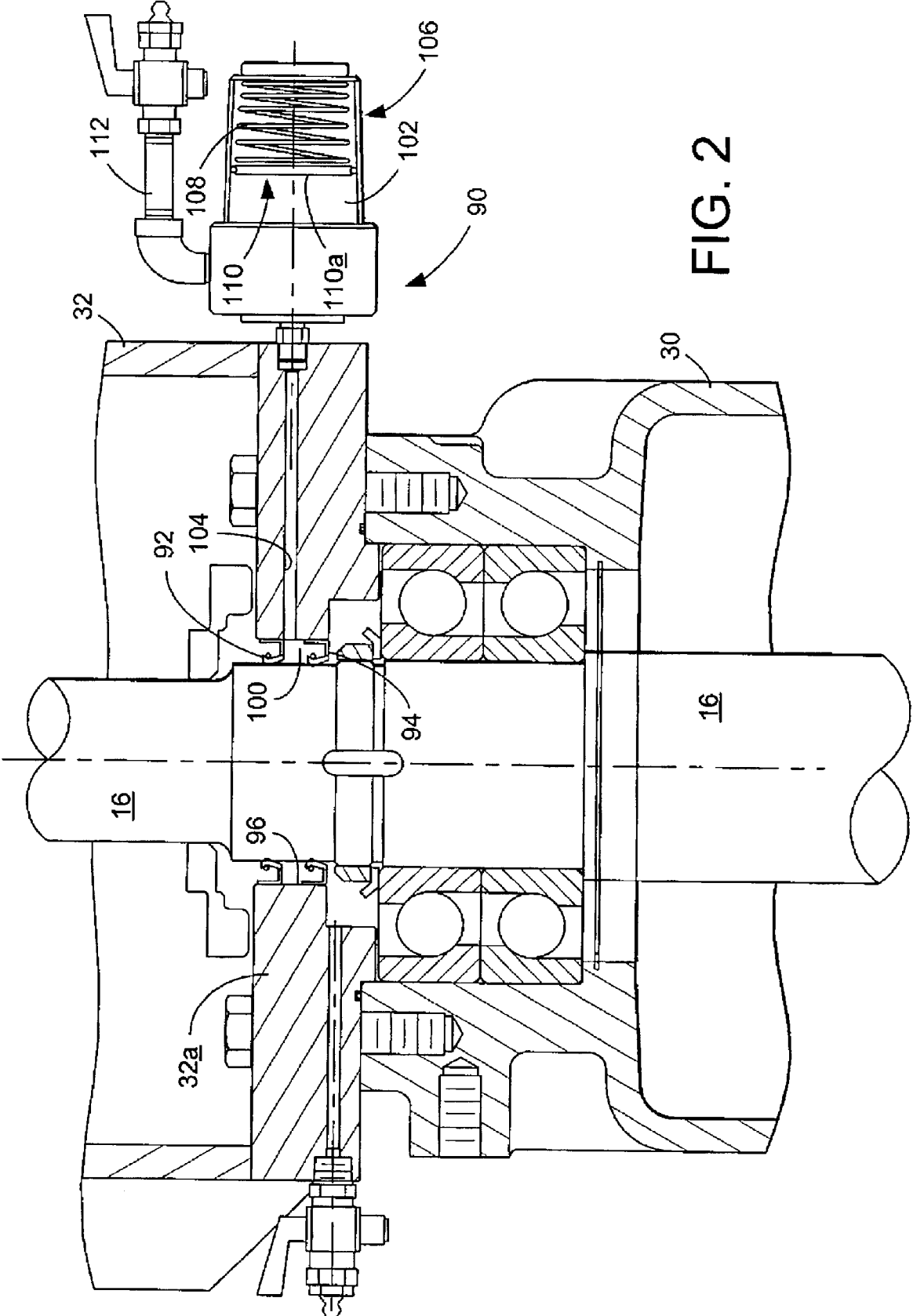


FIG. 2

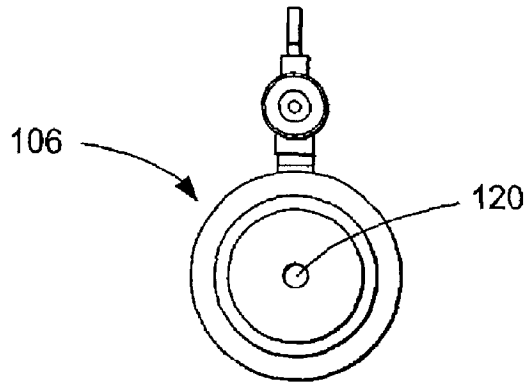


FIG. 3

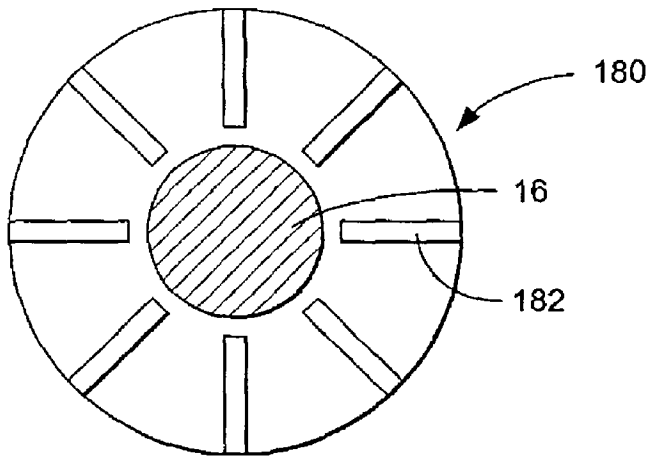


FIG. 5

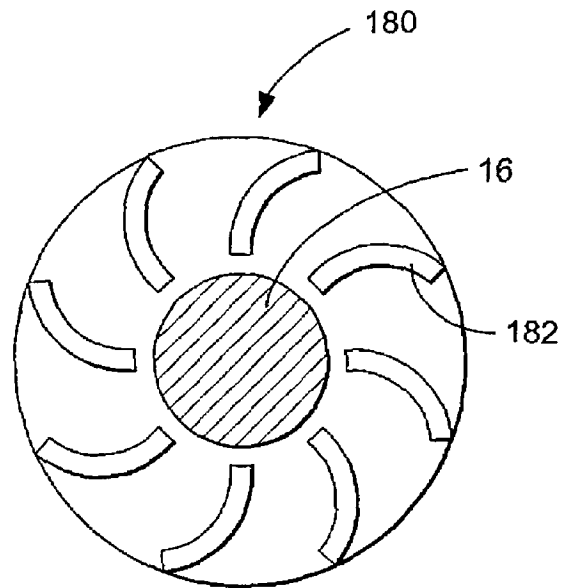
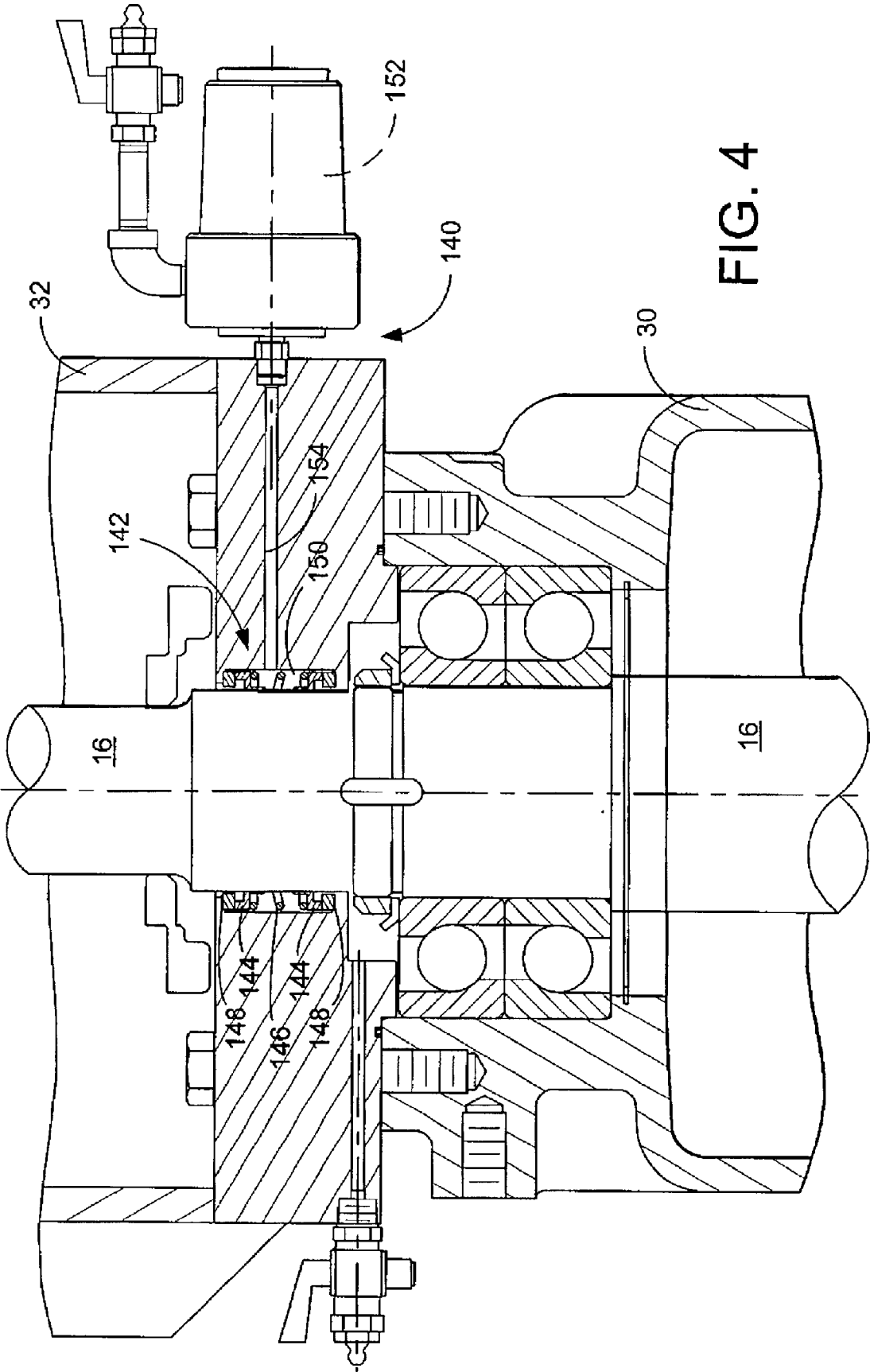
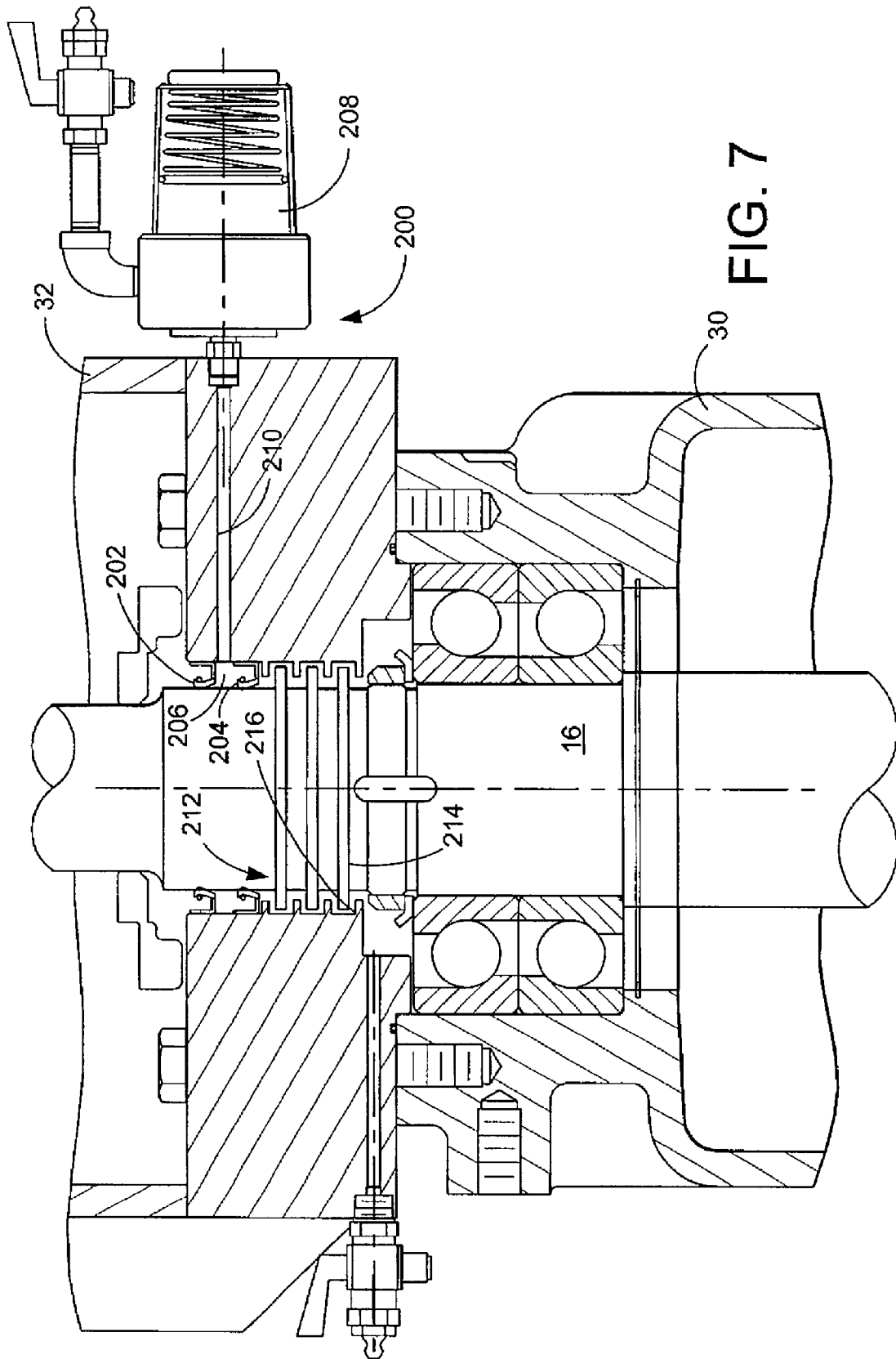


FIG. 6





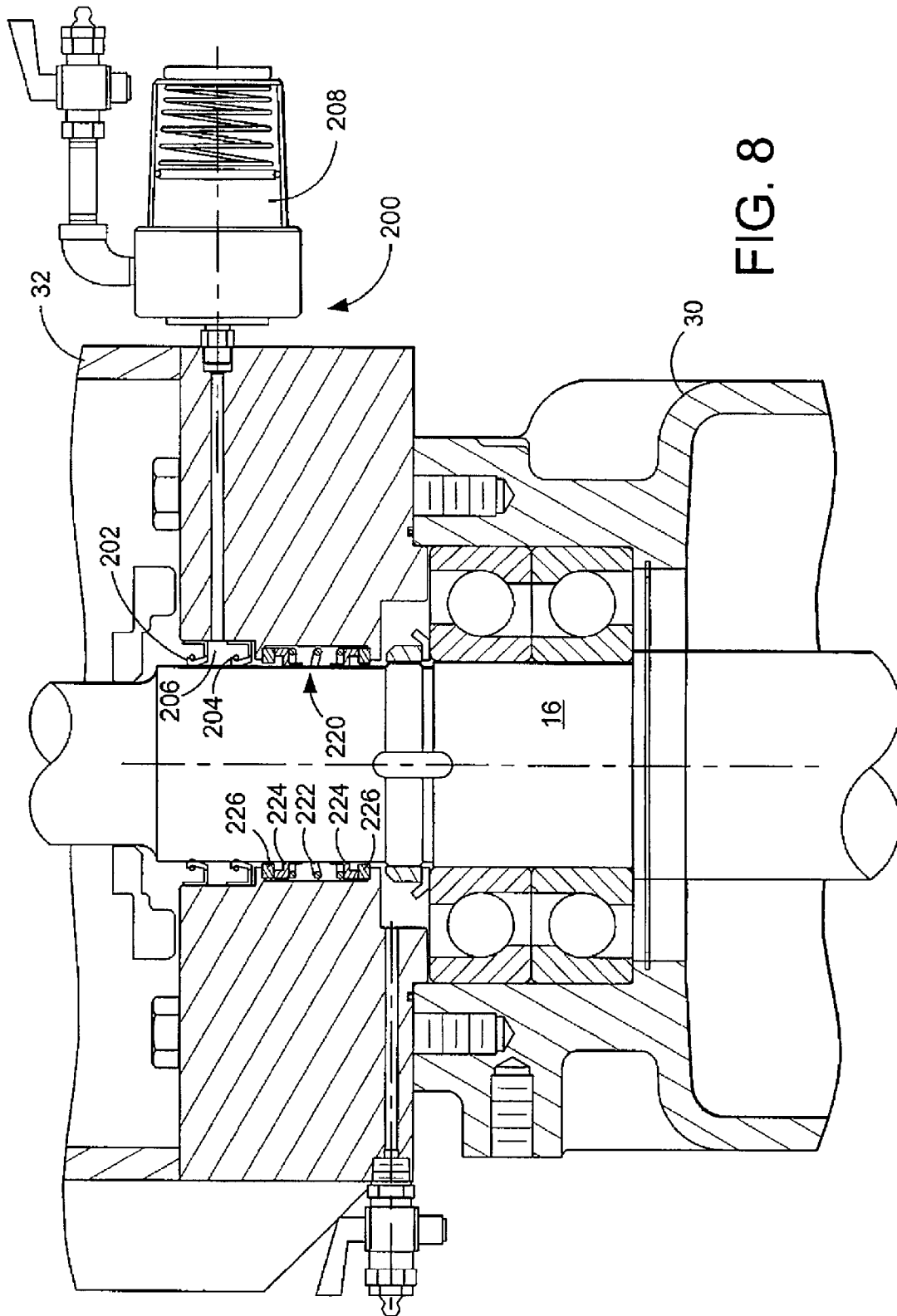


FIG. 8

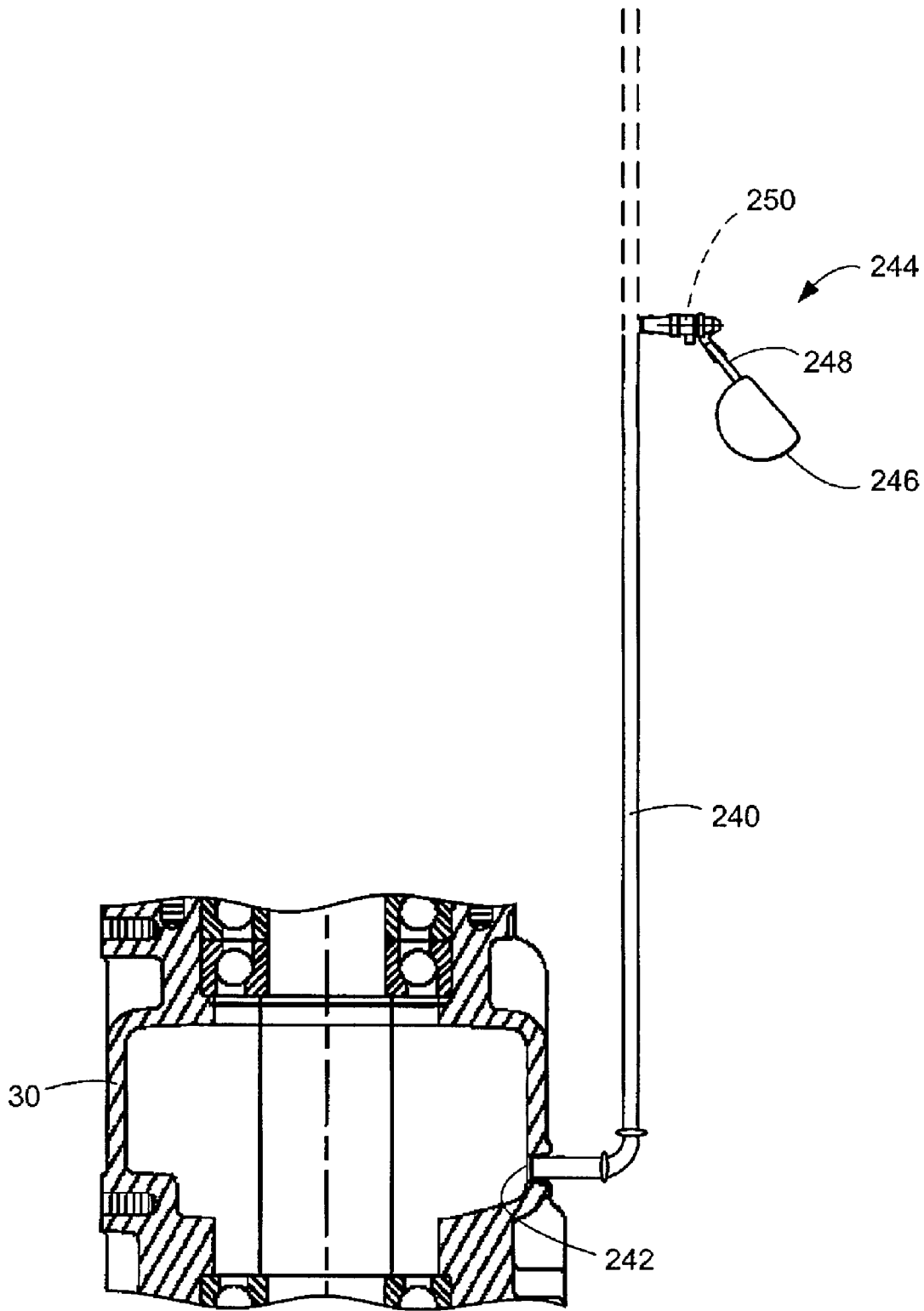


FIG. 9

1

PUMP SYSTEM WITH VARIABLE-PRESSURE SEAL

TECHNICAL FIELD

The present invention relates to pump systems having variable-pressure shaft seals and other mechanisms to protect components from moisture-related damage.

BACKGROUND OF THE INVENTION

Pump systems often include various components and structures designed to protect the bearing frame or other portions of the pump system from pumped liquid or other moisture. For example, many types of pump systems employ various seals in connection with rotating shafts. Such a shaft might be used to drive a pump impeller, to provide rotational output from a motor, or for other purposes. The shaft extends through various openings in the pump system (e.g., through the bearing frame), and these openings are often sealed in order to provide a waterproof barrier or enclosure. In a centrifugal pump, for example, the pump casing typically is sealed at the opening where the impeller shaft enters the casing, in order to prevent pumped liquid from leaking out through the opening along the impeller shaft. Such leakage can potentially cause damage to bearing assemblies, to the motor, or to other components of the pump system, or can cause an environmental hazard. In addition to the shaft seals described above, various other structures and methods may be used to provide protection, including waterproof casings, non-shaft seals, sealed enclosures, etc.

Improving the performance of seals and increasing other protections against water damage are important goals in the design of bearing frames and other pump system components. Depending on the pumping application and/or pumping conditions, the protection afforded by many existing pump systems often is limited or inadequate. Many existing systems are ill-equipped to protect against the risk of flooding, which can lead to damage to bearing assemblies, motors or other components. Existing shaft seals, for example, often are designed to protect against only splashing or brief immersions in liquid. Many pump system components are provided with no protection at all against the risk of flooding.

SUMMARY OF THE INVENTION

Accordingly, an improved pump system is provided, including an impeller and an impeller shaft, which has one end secured to the impeller and another end configured to coupled to a motor in order to drive the impeller. The pump system further includes a substantially liquid-proof barrier which has an opening through which the impeller shaft extends. The opening in the barrier is sealed with a shaft sealing system that includes a supply chamber fluidly coupled with a cavity. The cavity surrounds, and is at least partially bounded by, the impeller shaft. The shaft sealing system further includes a pressure mechanism that is configured to pressurize lubrication matter contained within the supply chamber and cavity, so as to inhibit liquid from passing along the impeller shaft through the cavity and thereby penetrating the liquid-proof barrier. The pressure mechanism is further configured to vary pressure of the lubrication matter based on atmospheric pressure surrounding the pump system.

The pump system may further include a bearing frame through which the impeller shaft extends. In such a case, the

2

shaft sealing system (or more than one such system) may be employed to seal the bearing frame and thereby inhibit penetration of moisture into the bearing frame. In addition to or instead of the shaft sealing system(s), the bearing frame may be provided with a vent that is closeable via operation of a float valve assembly upon flooding of the pump system.

BRIEF DESCRIPTION OF THE DRAWINGS

FIG. 1 is a partially cross-sectioned view of a pump system according to the invention.

FIG. 2 is an enlarged partially cross-sectioned view of a variable-pressure sealing system that may be implemented in connection with the pump systems of the invention.

FIG. 3 is an end view of the sealing system shown in FIG. 2.

FIG. 4 is an enlarged partially cross-sectioned view of an alternately configured variable-pressure sealing system that may be implemented in connection with the pump systems of the invention.

FIGS. 5 and 6 depict embodiments of a rotational/centrifugal sealing device that may be used with the pump systems of the invention.

FIG. 7 is an enlarged partially cross-sectioned view of the variable-pressure sealing system of FIG. 2, as used in combination with a labyrinth-type shaft seal.

FIG. 8 is an enlarged partially cross-sectioned view of the variable-pressure sealing system of FIG. 2, as used in combination with a mechanical-type shaft seal.

FIG. 9 depicts the bearing frame shown in FIG. 1 with an alternately configured venting system.

DETAILED DESCRIPTION OF THE INVENTION

A pump system is indicated generally at **10** in FIG. 1. Pump system **10** includes a motor **12** coupled to a centrifugal pump **14** via an impeller shaft **16**. Pump **14** typically includes an impeller **18** that is disposed within a volute or pump casing **20** and secured to an end of impeller shaft **16**. Actuation of motor **12** causes impeller shaft **16** to rotate, which in turn imparts rotation to impeller **18**. The rotation of impeller **18** draws liquid through an inlet **22**. The drawn liquid passes into the center, or "eye," of the pump and is then discharged through outlet **24** via the centrifugal rotating action of impeller **18**.

Centrifugal pumps such as that described above have proved particularly suitable for use with the present invention. The 6NHTA-VC18DB, produced by Cornell Pump Company, is an example of a centrifugal pump that may be used. It should be appreciated, however, that other types of pumps may be implemented in embodiments of the invention as desired.

Pump system **10** may be provided with nearly any type of motor **12**. Electric motors, for example, have proved advantageous in many settings. Combustion-type motors may be used as well. Suitability of a given motor typically will depend on the intended use of pump system **10**. In some cases, it will be desirable to employ a motor capable of running in both a dry condition and an immersed condition. Examples of such pump/motor systems are set forth in U.S. Pat. No. 6,079,958, by Mark Qandil, entitled "Dry-Pit Submersible Pump Having a Fan and Torque-Relieving Mechanism," and in U.S. Pat. No. 6,183,208, by Mark M. Qandil and Robert B. Ray, entitled "Immersible Motor System," the disclosures of which are incorporated herein by this reference, in their entirety and for all purposes.

Typically, various additional structural components are provided between motor **12** and pump **14**. In particular, the depicted pump system includes a bearing frame **30** and mounting brackets **32** and **34**. Bracket **34** is secured between centrifugal pump **14** and bearing frame **30**, and may be referred to as the pump bracket. Bracket **32** is secured between the bearing frame and motor **12**, and may be referred to as the motor bracket.

As indicated, impeller shaft **16** extends through bearing frame **30** and brackets **32** and **34**. As indicated, impeller **18** may be fitted to an end of impeller shaft **16** and secured in place via a fastener **36** that is axially aligned with the impeller shaft and secured within a bore **38** in the end of the shaft. Bearing frame **30** typically houses one or more bearing assemblies configured to support and facilitate rotation of impeller shaft **16**. For example, the depicted exemplary bearing frame includes an upper bearing assembly **40** positioned adjacent an upper opening **42** of the bearing frame. Lower bearing assembly **44** is provided adjacent a lower opening **46** of the bearing frame. As indicated, pump system **10** may be provided with lubrication channels **50** by which grease or other forms of lubrication are delivered to the bearings.

In many pumping applications, the impeller shaft **16** is subject to significant radial loads and axial (thrust) loads during operation. Brackets **32** and **34**, and particularly bearing frame **30**, may be designed to withstand these loads to some extent and prevent excessive wear or strain on motor **12**. Accordingly, the deployment and design of these components will vary with the intended use of pump system **10**.

Pump system **10** typically is provided with various structures to protect components of the pump system from water damage. As with other aspects of pump system **10**, the design and implementation of these components will vary depending on the particular pumping application. Some applications, for example, involve frequent partial or full immersion of the pump system. In other cases, the pumping environment is dry nearly all of the time, though there are occasional flood situations which can damage the motor, bearing frame or other components.

Referring still to FIG. **1**, pump system **10** typically is provided with one or more sealing structures at various points between motor **12** and impeller **18**. Sealing structures may be employed to keep water within a compartment or enclosure, to prevent water from entering an enclosure, to seal a shaft opening, or to otherwise provide a liquid-proof barrier. For example, as indicated, it will often be desirable to seal pump casing **20** at the point where impeller shaft **16** enters the casing. This may be accomplished as shown with a mechanical seal **80** located just inside pump casing **20**, to prevent pumped liquid from being discharged into the interior of bracket **34**. Other types of shaft seals may be used in addition to, or instead of, mechanical seal **80**.

Mechanical seal **80** may be considered a dynamic seal, because it provides sealing between components that move relative to one another: impeller shaft **16** and pump casing **20**. Various "static seals" may also be employed in the depicted pump system **10**. For example, an o-ring seal **82** is provided between the upper end of bearing frame **30** and the lower end of bracket **32**. A similar o-ring **84** is provided between the bearing frame and bracket **34**.

Bearing frame **30** may also be sealed to protect the bearing assemblies and other components within the bearing frame from moisture damage. In the depicted system, this is accomplished by sealing the openings through which impeller shaft **16** extends at either end of the bearing frame. In

some cases, as in the depicted example, the impeller shaft will extend through aligned openings in multiple structural components. Referring specifically to the upper end of bearing frame **30**, impeller shaft **16** extends through aligned openings in the upper end of the bearing frame and the lower end of motor bracket **32**. These openings typically are sealed, as described below, such that the adjoining portions of the bearing frame and motor bracket form a liquid-proof barrier.

Referring now to both FIGS. **1** and **2**, a shaft sealing system **90** may be provided to seal the upper end of bearing frame **30**. Sealing system **90** includes a double lip seal arrangement (lip seals **92** and **94**) positioned within an aperture **96** that is defined through a lower wall portion **32a** of motor mounting bracket **32**. The lip seals may alternatively be secured to bearing frame **30**. Lip seals **92** and **94** extend from the edge of the aperture toward the surface of impeller shaft **16**. The lip seals are biased into contact with the impeller shaft, often through use of one or more springs. Various types of lip seals may be employed, though an arrangement employing springs in connection with dual Viton® lip seals has proved suitable. In addition to, or instead of springs, the lip seals themselves may be formed with a spring-like characteristic so that the ends of the lip seals are resiliently biased into contact with the impeller shaft.

It will thus be appreciated that a cavity **100** is formed around impeller shaft **16**. This cavity is defined partly by the double lip seal arrangement. Specifically, the cavity is bounded by lip seals **92** and **94**, by impeller shaft **16**, and by portions of bracket **32** which define the aperture through which the impeller shaft is received.

Cavity **100** typically is filled with grease or some other type of lubrication matter such as oil. The grease may be supplied to the cavity from a grease supply chamber **102** that is fluidly coupled with cavity **100** via a channel **104** formed in bracket **32**. When cavity **100** is thus filled with grease, the lip seals and grease cooperate to inhibit water or other liquid from passing along impeller shaft **16** through cavity **100**. This, in turn, protects against liquid entering the enclosure defined by bearing frame **30**.

Grease supply chamber **102** may be contained within a grease cup **106**. Grease cup **106** includes a biasing mechanism, such as spring **108**, that urges against a movable barrier such as a piston **110** or the like. As indicated, a grease inlet **112** may be provided to allow grease to be added to or removed from supply chamber **102**.

Piston **110** includes an operative surface **110a** that cooperates with a portion of the interior surface of the grease cup to define the boundary of grease supply chamber **102**. The urging of piston **110** toward the grease supply chamber pressurizes the grease contained within supply chamber **102**, channel **104** and cavity **100**. The stiffness of the biasing mechanism (e.g., spring **108**) may be varied as desired to change the pressure of the grease. Instead of, or in addition to, the spring and piston arrangement, the grease may be held within an elastomeric bladder, or within some other variable-volume container in order to pressurize the grease.

Sealing system **90** may also be configured to dynamically vary the grease pressure based on atmospheric conditions surrounding pump system **10**. As seen in FIG. **3**, this may be accomplished by providing one or more openings **120** in the exterior wall of grease cup **106**. Because of the opening(s), pressure surrounding the pump system is applied to the movable barrier (e.g., piston **110**) which contains the grease. The atmospheric pressure can thus combine with the force

exerted by spring **108** to dynamically vary the pressure of the grease contained within cavity **100**. Sealing system **90** may thus be considered a variable-pressure sealing system.

The atmosphere-dependent pressure variation can be particularly advantageous in the event of accidental flooding, or in the case of the expected immersions that occur during certain types of pumping operations. In such a case, liquid is allowed to enter grease cup **106** through opening(s) **120**. The liquid fills the interior of grease cup **106** on the “spring side” of piston **110**. The pressure of the liquid places an added force on piston **110**, which in turn increases the pressure of the grease contained within cavity **100**. The increase in grease pressure can improve the ability of the sealing system to inhibit pumped liquid from passing through cavity **100**, or from otherwise compromising the seal.

The advantages of the variable-pressure sealing system may be seen in the context of a flooded pumping station. In flooded conditions, it is not uncommon for a pump to be under several feet of water. The depth of the immersion increases the risk that water will penetrate sealed barriers or enclosures and damage components of the pump system. For example, immersing pump system **10** under ten feet of water would place considerable pressure on the seals that protect the bearing frame enclosure. The variable-pressure system is configured to compensate for such increased demands placed upon the seal. Specifically, as discussed above, the increased pressure surrounding the pump system because of the flooding produces an increase in the pressure of the grease contained within cavity **100**. This, in turn, will increase the effectiveness of the seal and provide protection against the heightened risk of water damage.

A variable-pressure sealing system such as that described above may be used in a variety of locations on pump system **10**. In the depicted pump system, for example, the bottom of the bearing frame **30** may be sealed with a variable-pressure sealing system **130** similar to that just described with reference to the upper end of the bearing frame. The described variable-pressure seal may also be used to effect shaft seals on any portion of brackets **32** and **34**. The variable-pressure system may further be used in connection with sealing motor **12** or pump casing **20**. Indeed, the variable-pressure system may be employed wherever it is necessary or desirable to seal a shaft opening through an enclosure wall or other liquid-proof barrier.

In addition, various types of lubrication matter may be provided within cavity **100** to effectuate a seal. Typically, as described above, grease will provide effective sealing. In other cases, oil or some other type of lubrication matter may be employed.

FIG. 4 depicts a variable-pressure sealing system **140** that may be used in addition to, or instead of, the above-described sealing system **90**. Sealing system **140** employs a mechanical seal **142** instead of the double lip seal arrangement shown in FIGS. 1 and 2. Mechanical seal **142** typically includes a pair of rotating faces **144** and a spring **146**. Rotating faces **144** are annular and fixed to impeller shaft **16** so that the faces rotate with the shaft but are able to slide vertically along the length of the shaft. Spring **146** is disposed between rotating faces **144**, urging them away from each other and into engagement with interfacing portions **148** of bracket **32**. A sealed interface is thus created between rotating faces **144** and the corresponding bracket portions **148**, which prevents moisture and other contamination from entering the interior of bearing frame **30** along impeller shaft **16**.

It will thus be appreciated that the mechanical seal forms a cavity **150** surrounding the impeller shaft, similar to that described above with reference to the double lip seal arrangement. Cavity **150** is bounded by the surface of impeller shaft **16**, rotating faces **144**, and by bracket **32**. Sealing system **140** further includes a lubrication matter subsystem as previously described, including a supply chamber **152** that is fluidly coupled with cavity **150** via a channel **154** defined through bracket **32**. Supply chamber **152** may be dynamically pressurized as described above, for example through use of the previously described piston and spring structures, or through other suitable mechanisms. In the depicted mechanical seal configuration, it may be desirable to employ oil as the lubrication matter in cavity **150**.

The above examples involve use of a double lip seal and double mechanical seal in connection with the described variable-pressure sealing system. It should be appreciated, however, that other types of seals may be used such as a single mechanical seal, labyrinth seal, etc. Generally, any type of shaft seal may be employed, assuming a cavity can be provided around the shaft in order to contain the lubrication matter.

To provide further protection, pump system **10** may be provided with one or more rotating/centrifugal sealing devices in various locations. Examples of such a device are depicted at **170** and **172** adjacent the upper and lower ends of bearing frame **30** near the impeller shaft openings in the bearing frame enclosure. Devices **170** and **172** may also be referred to as repellers (or expellers), for reasons which will be apparent from the following discussion.

Typically, the repellers are disc-shaped and are press-fitted or otherwise fixed to impeller shaft **16** so that they are positioned near a shaft opening at a close clearance to the sealed barrier in which the shaft opening is defined. For example, in FIG. 1, repeller **170** is fitted to shaft **16** and is positioned at a close clearance to motor bracket **32**. Bracket **32** may be modified from the depicted configuration with a cavity or depression sized to accommodate repeller **170**.

As shaft **16** rotates, repeller **170** also rotates, and thereby repels fluid away from the center of repeller **170**, and away from the sealed impeller shaft opening into bearing frame **30**. The rotation of repeller **170** also creates regions of differing pressure. The repelling action and pressure differential further protect against fluid and other matter from entering the bearing frame enclosure along impeller shaft **16**.

Repellers **170** and **172** typically include at least one, and preferably several, vane(s) or similar structure(s) located on the side of the device that faces the sealed shaft opening, though these structures are not essential. For example, the repeller may be formed without vanes as a smooth disc positioned at a close clearance to the sealed barrier. FIGS. 5 and 6 depict configurations of a repeller **180** having vanes **182**, and reveal that the vanes may be curved or radial and straight. The vanes generally are radially configured to extend outward from impeller shaft **16**. Alternatively, the vanes may be formed in any shape, size and orientation in order to provide a desired pressure differential and/or level of repelling upon rotation of shaft **16**.

The repeller device described above may be configured to provide protection in both wet and dry conditions. When the repeller is used with a pump system that is flooded or otherwise submerged, it helps to prevent liquid from penetrating through a sealed shaft opening as described above. The repeller can additionally provide protection on a pump system that is operated in a non-submerged state. The repeller can provide protection against splashing, for

example while the pump system is being washed down, and can also protect against dust and other debris from entering into the sealed opening and sealed enclosure.

Referring now to FIGS. 7 and 8, additional shaft seals may be employed in combination with the variable-pressure seal systems described above. Referring first to FIG. 7, a variable-pressure seal system 200 is depicted. Seal system is similar to that described above, and includes double lip seals 202 and 204 that cooperate with impeller shaft 16 and bracket 32 to define a cavity 206 that generally surrounds the impeller shaft. Lubrication matter is supplied from a dynamically pressurizable supply chamber 208 through a channel 210 defined in bracket 32. In addition to seal system 200, FIG. 7 shows use of an additional shaft seal in the form of a labyrinth seal 212, including a plurality of ring-like rib structures 214 affixed to impeller shaft 16. Rib structures 214 intermesh with corresponding recesses 216 formed in bracket 32, to further inhibit pumped liquid from passing along impeller shaft 16.

FIG. 8 depicts the variable-pressure seal system of FIG. 7 (i.e., system 200), but in combination with a mechanical seal 220. Several reference numbers from FIG. 7 are shown in FIG. 8, though the corresponding parts will not be described again. Referring particularly to mechanical seal 220, the mechanical seal includes a spring 222 configured to urge rotating face portions 224 of the mechanical seal into contact with portions 226 of bracket 32 so as to create a sealing interface. As revealed by the foregoing examples of FIGS. 7 and 8, and by the preceding discussion, the variable-pressure sealing systems of the invention may be employed in a wide variety of configurations to provide high-performance shaft sealing in a pump system.

As discussed in detail above, bearing frame 30 (FIG. 1) typically is sealed at openings 42 and 46 to protect the bearings from being damaged by water or other liquid entering the bearing frame enclosure. Though the bearing frame is often sealed where impeller shaft 16 passes into and out of the bearing frame (e.g., openings 42 and 46), it will often be desirable to vent the bearing frame. Without such venting, there can be an undesirable increase in pressure within the bearing frame due to heat generated during operation of pump system 10. Such heat can be produced, for example, by friction created by the rotation of impeller shaft 16.

Accordingly, as seen in FIG. 1, bearing frame 30 may be provided with a vent 60 or like opening in the sidewall of the bearing frame, or in another suitable location. As indicated, a float valve assembly 62 may also be provided in connection with vent 60. Float valve assembly 62 includes a float 64 and a linkage 66 coupled between the float and a valve structure 68 that is selectively operable to open and close vent 60. Float valve assembly 62 causes vent 60 to close as water or other liquid rises around the pump system, as would occur for example during the flooding of a pumping station. Specifically, float 64 rises as liquid levels surrounding bearing frame 30 rise. This in turn moves linkage 66 so as to cause valve structure 68 to seal vent 60 shut. The bearing frame is thus vented at all times except when water levels rise to a point where there is a risk of water entering the bearing frame. When water rises to this point, the float valve automatically closes the vent to prevent water damage to the bearings and other components inside the bearing frame.

FIG. 9 depicts an alternate vent/valve mechanism for selectively venting bearing frame 30. In this alternate configuration, bearing frame 30 is vented through a pipe 240 or like structure connected to a vent opening 242 in bearing

frame 30. During non-submerged operation, pipe 240 and opening 242 vent the interior of bearing frame 30. As before, a float valve assembly 244 may be provided to protect the interior of the bearing frame from moisture damage. Float valve assembly 244 includes a float 246 and a linkage 248 coupled between the float and a valve structure 250 that closes to seal off pipe 240 when float 246 is raised by elevated liquid levels.

Use of pipe 240 allows float 246 to be positioned much higher relative to bearing frame 30 than in the previously described configuration, and water thus rises to a higher level before the vent is sealed off by float valve assembly 244. This will be desirable in many cases, because the submerged water can cool the bearing frame prior to closing of the vent. Alternatively, the float valve assembly may be omitted altogether, and pipe 240 may be extended (as indicated by the dashed lines) to a height that is above any anticipated flood level.

While the present invention has been particularly shown and described with reference to the foregoing preferred embodiments, those skilled in the art will understand that many variations may be made therein without departing from the spirit and scope of the invention as defined in the following claims. The description of the invention should be understood to include all novel and non-obvious combinations of elements described herein, and claims may be presented in this or a later application to any novel and non-obvious combination of these elements. Where the claims recite "a" or "a first" element or the equivalent thereof, such claims should be understood to include incorporation of one or more such elements, neither requiring nor excluding two or more such elements.

What is claimed is:

1. A pump system, comprising:

an impeller;

an impeller shaft having an impeller end secured to the impeller and a drive end configured to be operatively coupled to a motor in order to drive the impeller; and

a substantially liquid-proof barrier having an opening through which the impeller shaft extends, the opening being sealed with a shaft sealing system that includes: a supply chamber in fluid communication with a cavity that surrounds, and is at least partially bounded by, the impeller shaft; and a pressure mechanism configured to pressurize lubrication matter contained within the supply chamber and cavity so as to inhibit liquid from passing along the impeller shaft through the cavity and thereby penetrating the liquid-proof barrier, where the pressure mechanism is configured to act upon the lubrication matter in the supply chamber to vary pressure of the lubrication matter during operation of the pump system based on atmospheric pressure surrounding the pump system.

2. The pump system of claim 1, where the supply chamber is fluidly coupled with the cavity via a channel.

3. The pump system of claim 2, where the channel is defined through the liquid-proof barrier.

4. The pump system of claim 1, where the pressure mechanism includes a piston having an operative surface that at least partially bounds the supply chamber, where the piston is movable in order to vary pressure applied to the lubrication matter.

5. The pump system of claim 4, where the pressure mechanism includes a biasing mechanism configured to urge the piston toward the supply chamber so as to maintain pressure in the lubrication matter.

9

6. The pump system of claim 5, where the biasing mechanism is a spring.

7. The pump system of claim 6, where the piston and spring are disposed within a housing, such that the operative surface of the piston and an interior surface of the housing define the supply chamber, the spring being positioned opposite the operative surface of the piston.

8. The pump system of claim 7, where a hole is defined through a portion of the housing such that a side of the piston opposite the supply chamber is exposed to atmospheric conditions surrounding the pump system.

9. The pump system of claim 1, where two lip seals are positioned within the opening in the liquid-proof barrier such that ends of the lip seals contact the impeller shaft, and where the lip seals at least partially define the cavity surrounding the impeller shaft.

10. The pump system of claim 1, where a mechanical seal is positioned within the opening in the liquid-proof barrier such that the mechanical seal at least partially defines the cavity surrounding the impeller shaft.

11. The pump system of claim 1, where the impeller shaft extends through and is supported by a sealed bearing frame coupled between the impeller and the motor, and where the shaft sealing system seals around the impeller shaft at an end of the bearing frame.

12. The pump system of claim 11, where the shaft sealing system is one of two such shaft sealing systems, and where the second shaft sealing system seals around the impeller shaft at another end of the bearing frame.

13. The pump system of claim 11, where the bearing frame includes a vent for venting an interior of bearing frame, the pump system further comprising a float valve assembly coupled to the bearing frame and configured to selectively close the vent when the bearing frame is in an at least partially immersed state.

14. The pump system of claim 1, where the lubrication matter is grease.

15. The pump system of claim 1, where the lubrication matter is oil.

16. A pump system, comprising:

an impeller disposed within a pump casing having an inlet and an outlet;

a motor;

an impeller shaft coupled between the motor and the impeller and configured to impart rotation to the impeller upon activation of the motor; and

a sealed bearing frame through which the impeller shaft extends, where the bearing frame is secured between the motor and impeller and includes an air vent that is closeable via operation of a float valve assembly upon flooding of the pump system.

17. The pump system of claim 16, where the impeller shaft extends through a sealed opening at a first end of the bearing frame and through a sealed opening at a second end of the bearing frame, each of the sealed openings being sealed with a variable-pressure sealing system including:

a supply chamber in fluid communication with a cavity that surrounds, and is at least partially bounded by, the impeller shaft; and

a pressure mechanism configured to pressurize lubrication matter contained within the supply chamber and cavity so as to inhibit liquid from passing along the impeller shaft through the cavity and into the bearing frame, where the pressure mechanism is configured to vary pressure of the lubrication matter based on atmospheric pressure surrounding the pump system.

10

18. The pump system of claim 17, where for each of the variable-pressure sealing systems, the supply chamber is fluidly coupled with the cavity via a channel.

19. The pump system of claim 17, where for each of the variable-pressure sealing systems, the pressure mechanism includes a piston having an operative surface that at least partially bounds the supply chamber, where the piston is movable in order to vary pressure applied to the lubrication matter.

20. The pump system of claim 19, where for each of the variable-pressure sealing systems, the pressure mechanism includes a biasing mechanism configured to urge the piston toward the supply chamber so as to maintain pressure in the lubrication matter.

21. The pump system of claim 20, where for each of the variable-pressure sealing systems, the biasing mechanism is a spring.

22. The pump system of claim 21, where for each of the variable-pressure sealing systems, the piston and spring are disposed within a housing, such that the operative surface of the piston and an interior surface of the housing define the supply chamber, the spring being positioned opposite the operative surface of the piston.

23. The pump system of claim 22, where for each of the variable-pressure sealing systems, a hole is defined through a portion of the housing such that a side of the piston opposite the supply chamber is exposed to atmospheric conditions surrounding the pump system.

24. The pump system of claim 17, where for each of the variable-pressure sealing systems, two lip seals are positioned within the corresponding sealed opening such that ends of the lip seals contact the impeller shaft, and where the lip seals at least partially define the cavity surrounding the impeller shaft.

25. The pump system of claim 16, where the float valve assembly includes a linkage coupled between a float and a valve structure, the float valve assembly being configured so that the float rises as liquid rises around the bearing frame, thereby moving the linkage and valve structure so as to close the vent prior to liquid rising to a level where it can enter the vent.

26. A pump system, comprising:

an impeller;

a motor; and

an impeller shaft coupled between the motor and the impeller and configured to impart rotation to the impeller upon activation of the motor, where the impeller shaft extends through a sealed bearing frame enclosure coupled between the impeller and the motor, and where first and second ends of the bearing frame enclosure are each sealed around the impeller shaft with a variable-pressure sealing system, including:

a supply chamber in fluid communication with a cavity that surrounds, and is at least partially bounded by, the impeller shaft; and

a pressure mechanism configured to pressurize lubrication matter contained within the supply chamber and cavity so as to inhibit liquid from passing along the impeller shaft through the cavity and into the bearing frame enclosure, where the pressure mechanism is configured to act upon the lubrication matter in the supply chamber to vary pressure of the lubrication matter during operation of the pump system based on atmospheric pressure surrounding the pump system.

27. The pump system of claim 26, where for each of the variable-pressure sealing systems, the pressure mechanism

11

includes a piston having an operative surface that at least partially bounds the supply chamber, where the piston is movable in order to vary pressure applied to the lubrication matter.

28. The pump system of claim 27, where for each of the variable-pressure sealing systems, the pressure mechanism includes a biasing mechanism configured to urge the piston toward the supply chamber so as to maintain pressure in the lubrication matter.

29. The pump system of claim 28, where for each of the variable-pressure sealing systems, the biasing mechanism is a spring.

30. The pump system of claim 29, where for each of the variable-pressure sealing systems, the piston and spring are disposed within a housing, such that the operative surface of

12

the piston and an interior surface of the housing define the supply chamber, the spring being positioned opposite the operative surface of the piston.

31. The pump system of claim 30, where for each of the variable-pressure sealing systems, a hole is defined through a portion of the housing such that a side of the piston opposite the supply chamber is exposed to atmospheric conditions surrounding the pump system.

32. The pump system of claim 26, where for each of the variable-pressure sealing systems, the cavity is at least partially defined by the impeller shaft and by a dual lip seal configuration including two lip seals that are resiliently biased into contact with the impeller shaft.

* * * * *